



# COMMUNITY DESIGN

## COLLABORATIVE

***Strengthening neighborhoods through design***

Community Design Collaborative  
1216 Arch Street, First Floor  
Philadelphia, PA 19107

[www.cdesignnc.org](http://www.cdesignnc.org)

**Alexa Bosse**  
Program Associate  
*Infill Philadelphia: Play Space*  
[alexa@cdesignnc.org](mailto:alexa@cdesignnc.org)

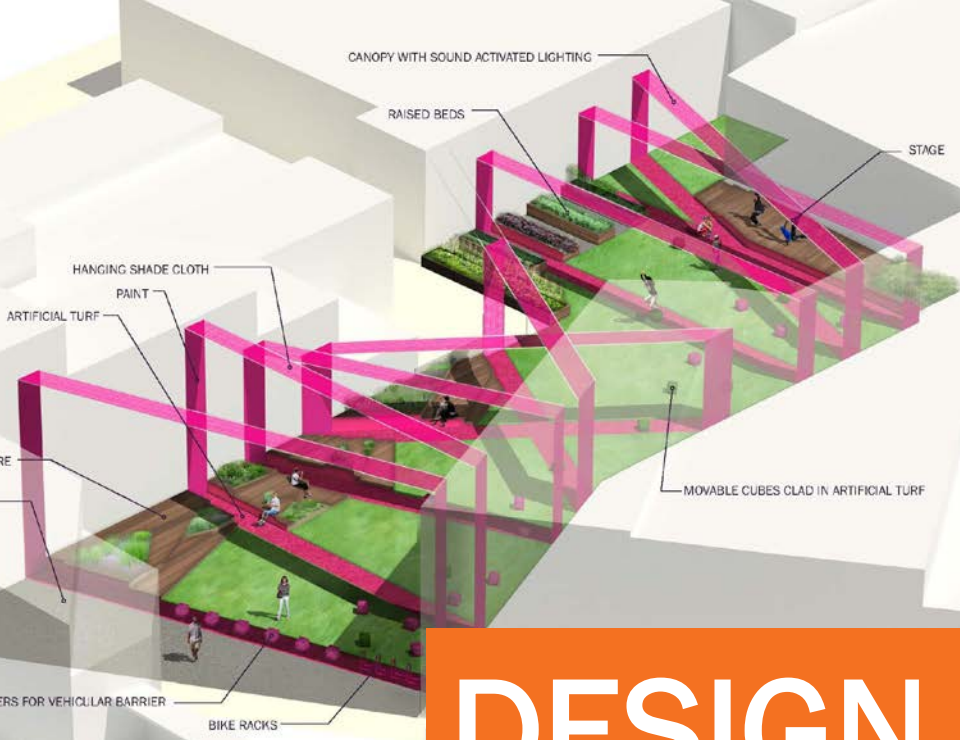




# WHAT WE DO







# DESIGN GRANTS





"Forming a dedicated committee of alumni, parents, and teachers was key to helping us get through the most important early phases."

—Lisa Armstrong, Chair, Greening Greenfield Committee



#### It took a village

The finished schoolyard looks great, but it took many volunteers, contractors, and design professionals and many workdays to make it happen. Greenfield leaders aimed to benefit more than their own community—they wanted to spark schoolyard greening projects at other Philadelphia public schools.

#### Good planning for both plants and play

Play equipment is adjacent to rain gardens, which means that students end up interacting with the native plants—playing hide and



#### Design Elements

### Support active play

Effective outdoor spaces support diverse activities for students, who seek different kinds of play depending on their age. Manufactured play equipment, for example, encourages both girls and boys to engage in vigorous physical activity. A multisensory environment should combine smooth, brightly colored play equipment with the rough and "wild" textures of natural landscapes.

Effective schoolyard designs target all three stages of children's physical development: activities that enable first graders to explore space and relationships; guided discovery, leaping, and climbing for second and third graders; and refining skills and developing upper-body strength in fourth- to fifth graders and middle schoolers.



#### Play equipment

A design for the schoolyard at Hackett Elementary clusters playground and fitness equipment to accommodate students of all ages. A central area leaves room for children to run and play games requiring a hard surface, while a grassy area provides room for less formal,

# SCHOOLYARDS

#### Design Elements

### Introduce learning tools

Innovative schoolyard elements support outdoor learning spaces that focus on academic achievement. Interacting with nature is in itself a learning opportunity—as simple as watching the flow of water through the schoolyard. Butterfly gardens, rain barrels, birdfeeders, and weather stations can instill an appreciation for the environment. These can be formal or informal and provide tools such as workstations and multiuse areas for inquiry and exploration, whether in science, technology, engineering, the arts, or mathematics (STEAM). Students pay attention for longer periods of time on outdoor assignments and focus more effectively when they return to the classroom.



#### Outdoor classroom

This McCall School plan reimagines an underused concrete plaza, which is separate from the main play area, as an outdoor classroom. The boulders (at the center of the image) provide classroom seating, as well as a natural edge that helps to define the space.



#### NURTURE SOCIAL ACTIVITIES

- nature-inspired play
- creative play
- play zones\*
- public and other art elements\*
- game tables

#### CREATE GATHERING SPACES

- community space\*
- cultural elements
- stage/amphitheater
- shade structure/bellies\*
- seating\*
- gateway/threshold\*



#### ENHANCE THE SITE

- fencing\*
- pick up/drop off area
- building improvements
- signage and lighting
- water source
- historic elements/interpretive signage
- parking
- storage
- dumpsters\*
- bike racks
- recycling and composting







2005/2006 Affordable Housing



2011/2012 Industrial Sites



2007/2008 Commercial Corridors



2013/2014 Soak It Up!



2009/2010 Food Access





# play space

*Where design  
comes into play*

COMMUNITY DESIGN  
COLLABORATIVE



**dvaerc**  
The voice of early childhood education



WILLIAM PENN  
FOUNDATION











# INITIATIVE OBJECTIVES

- ▶ Encourage innovative design
- ▶ Improve access
- ▶ Promote dialogue and collaboration
- ▶ Build awareness
- ▶ Provide prototypical design solutions





# PLAY SPACE COMPONENTS

- ▶ **EXHIBITION | *How We Play***  
*August – Sept 2015*
- ▶ **ART OF ACTIVE PLAY**  
*August – October 2015*
- ▶ **DESIGN COMPETITION**  
*September – March 2016*
- ▶ **DESIGN CHARRETTE**  
*October 2015*
- ▶ **PLAY TALKS**  
*Various dates*



# HOW WE PLAY | EXHIBITION





# PLAY TALKS | SPEAKERS + TRAINING SESSIONS

**Science of Play** | Susan G. Solomon  
January 6, 2015

***The Land* Screening** | Erin Davis  
& Morgan Leichter-Saxby  
August 12, 2015

**Playwork Approaches** | Morgan  
Leichter-Saxby & Peg Szczurek  
August 12, 2015

**Healthy Play Panel** | Design Philadelphia  
October 9th, 2015

**Child's Play - Public Presentation** |  
October 30, 2015

**Art of PlayA** | Anna Beresin  
November 4th, 2015

**Play Power** | Kathy Hirsh-Pasek  
December 9th, 2015







# ART OF ACTIVE PLAY | TACTICAL URBANISM









# CHILD'S PLAY | DESIGN CHARRETTE



Back Yard



Side Yard



# CHILD'S PLAY | DESIGN CHARRETTE





# DESIGN COMPETITION

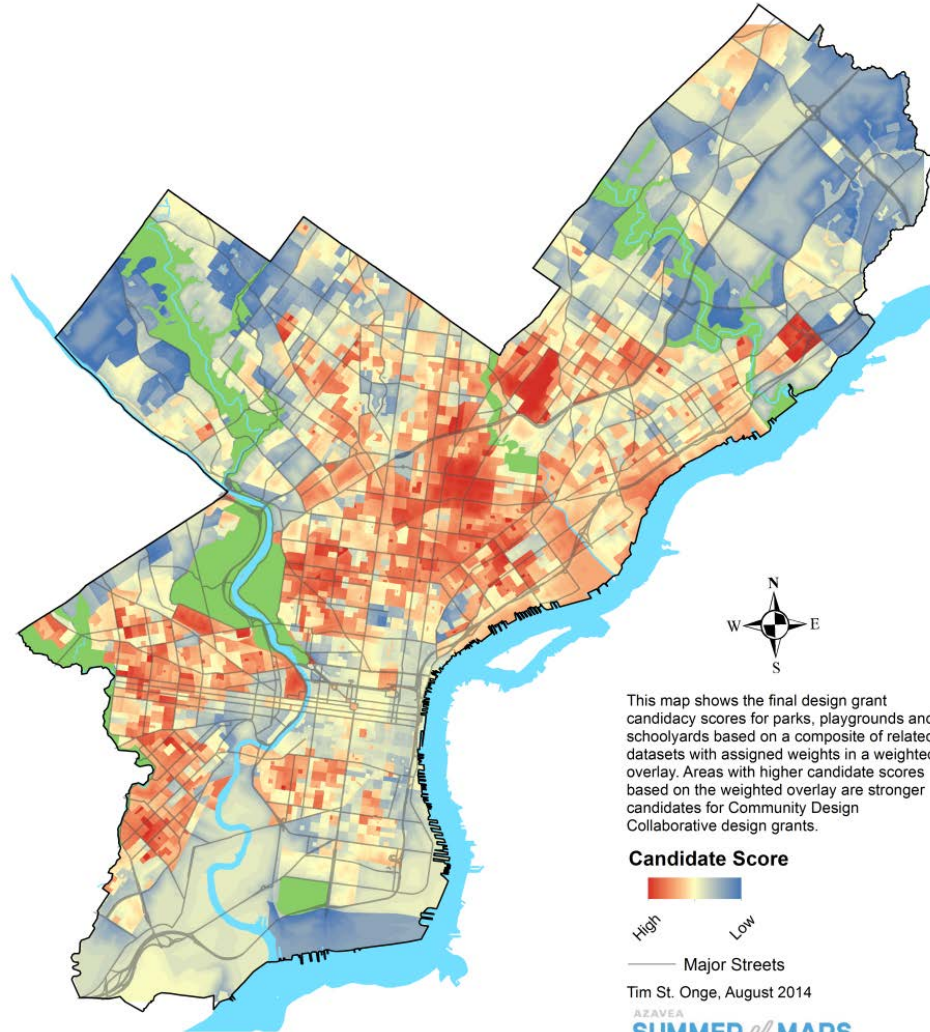


PHILADELPHIA  
PARKS &  
RECREATION



THE SCHOOL DISTRICT OF  
PHILADELPHIA

**Free**  
LIBRARY OF  
PHILADELPHIA



This map shows the final design grant candidacy scores for parks, playgrounds and schoolyards based on a composite of related datasets with assigned weights in a weighted overlay. Areas with higher candidate scores based on the weighted overlay are stronger candidates for Community Design Collaborative design grants.

#### Candidate Score



High Low

Major Streets

Tim St. Onge, August 2014

AZAVEA  
**SUMMER of MAPS**

SOURCE: American Community Survey  
(US Census Bureau), 2008-2012; Philadelphia  
Streets Dept.; Philadelphia Parks and  
Recreation Dept.; Philadelphia Water Dept.;  
The Reinvestment Fund

0 1 2 4 6 8  
Miles



# DESIGN COMPETITION | SITES



## LEARNING LANDSCAPES

**Free Library of Philadelphia**  
**Blanche A. Nixon/Cobbs Creek Branch**  
Cobbs Creek | 5800 Cobbs Creek Parkway



## RECLAIMING RECREATION

**Philadelphia Parks and Recreation**  
**Waterloo Recreation Center**  
Norris Square | 2501 Waterloo Street



## REVIVING RECESS

**Philadelphia School District**  
**Haverford Bright Futures**  
Mill Creek | 4601 Haverford Avenue



# INITIATIVE OBJECTIVES

- ▶ Revitalize under-used space
- ▶ Challenge traditional playground concepts
- ▶ Support development and learning
- ▶ Promote investment in play spaces
- ▶ Recognize innovation and creativity



# TEAM COMPOSITION

- ▶ **Multidisciplinary Integrated Team**
- ▶ **Required: Licensed Professional**  
Landscape Architect, Architect, or Civil Engineer
- ▶ **Strongly Recommended: Early Childhood Educator**
- ▶ **Additional Team Members Suggested:**

Playground design	Child development
Urban design	Playworker/play expert
Environmental design	Recreation therapist
Sustainable designer	Nature play/environmental educator
Stormwater/water resources	Public policy
Cost estimators	Public health
Implementers	Urban advocate
	Childcare family members/users

**SEPTEMBER 30, 2015**

**Registration Opens**

**NOVEMBER 30, 2015**

**Registration Closes**

**JANUARY 22, 2016**

**Submissions Due**

**FEBRUARY, 2016**

**Expert Jury Review**

**FEBRUARY, 2016**

**Finalists Notification**

**MARCH, 2016**

**Finals Event + Design Awards**

# EXPERT JURY

## SITE/COMMUNITY

**Joe Benford**, Free Library of Philadelphia

**Darren Cottman**, Free Library of Philadelphia

**Edwin Desamour**, MIMIC

**Denise Ellis**, Philadelphia School District

**Kathleen Muller**, Philadelphia Parks & Recreation

**Tom Schweiker**, Philadelphia School District

## DESIGN

**Betsy Caesar**, Med CPSI, Playcare, Inc.

**Nette Compton**, RLA, ASLA, Trust for Public Land

**Mark A. Focht**, FASLA, PLA, Philadelphia Parks & Recreation

## EARLY CHILDHOOD EDUCATION

**Laurel L. Byrne**, Ed.D., LaSalle University

**Peg Szczurek**, DVAEYC

## PLAY

**Ken Finch**, Consultant/Expert in Nature Play

**Debbie Green**, Parent Infant Center

## GREEN STORMWATER INFRASTRUCTURE

**Chris Crockett**, Philadelphia Water

## PUBLIC HEALTH

**Amanda Wagner**, MCP, MGA, Get Healthy Philly/Philadelphia Department of Public Health

## FIRST PRIZE

(3 prizes, 1 per site)

- Cash Award of \$10,000
- Profile in *Grid Magazine*, Summer 2016
- Opportunities for team presentations at conferences & forums
- Opportunities for boards to be displayed at traveling exhibitions

## FINALISTS PRIZES

(Up to 9, 3 per site)

- Presentation at *Infill Philadelphia: Play Space Design Awards*, March, 2016
- Three tickets to *Infill Philadelphia: Play Space Design Awards*, March, 2016
- Press coverage by *Grid magazine* Summer 2016
- Opportunities for boards to be displayed at traveling exhibitions



For information & competition registration:

[www.cdesignc.org/Infill/PlaySpace](http://www.cdesignc.org/Infill/PlaySpace)



**Alexa Bosse**

Program Associate

*Infill Philadelphia: Play Space*

[alexa@cdesignc.org](mailto:alexa@cdesignc.org)

**#PlaySpacePHL**

